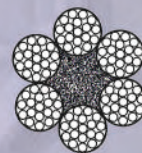


# Cable trolleys and accessories for steel rope track



**UNILIFT®**



## Table of contents

General utilization conditions and selection rules of mobile receivers supply systems .....	4
Selection of supply line parameters .....	4
Tensile force calculation .....	5
Steel rope selection .....	5
Steel rope mounting .....	6
Steel ropes .....	6
RTU – rope tension unit .....	6
RTU socket .....	7
Rope brackets .....	7
Cable trolleys for flat cables sign example .....	8
Cable trolleys for round cables sign example .....	8



Components of supply system with towing clamp without roller .....	9
Components of supply system with towing clamp with roller .....	9

Rope  $\varnothing$ 6-8 mm



Cable trolleys with plastic cable support <b>L=75 mm</b> .....	10
Cable trolleys with plastic cable support <b>L=90 mm, L=115 mm</b> .....	10
End clamps with plastic cable support <b>ZKL-76xD...</b> .....	10

Rope  $\varnothing$ 6-8 mm



Cable trolleys with steel cable support <b>L=75 mm</b> .....	11
Cable trolleys with steel cable support <b>L=90 mm, L=115 mm</b> .....	11
End clamp with steel cable support <b>ZKL-75xD...</b> .....	11

Rope  $\varnothing$ 6-8 mm



3 - roller cable trolleys with plastic cable support for rope $\varnothing$ 6-8 mm .....	12
3 - roller cable trolleys with steel cable support for rope $\varnothing$ 6-8 mm .....	12

Rope  $\varnothing$ 10-12 mm



Cable trolleys with plastic cable support <b>L=80 mm</b> .....	13
Cable trolleys with plastic cable support <b>L=115 mm, L=135 mm</b> .....	13
End clamps with plastic cable support <b>ZKL-76xD...</b> .....	13

Rope  $\varnothing$ 10-12 mm



Cable trolleys with steel cable support <b>L=80 mm</b> .....	14
Cable trolleys with steel cable support <b>L=115 mm, L=135 mm</b> .....	14
End clamp with steel cable support <b>ZKL-75xD...</b> .....	14

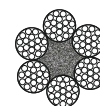
Rope  $\varnothing$ 10-12 mm



3 - roller cable trolleys with plastic cable support for rope $\varnothing$ 10-12 mm .....	15
3 - roller cable trolleys with steel cable support for rope $\varnothing$ 10-12 mm .....	15



Towing clamp without roller <b>ZZL-D...</b> .....	16
Towing clamp with roller <b>ZZRL-D...</b> .....	16
Towing arm <b>ZL...</b> .....	16



Components of supply system with towing clamp without roller .....	17
Components of supply system with towing clamp with roller .....	17

Rope Ø6-8 mm



Cable trolleys with ball joint <b>WK-RL-55</b> .....	18
Cable trolleys with ball joint <b>WK-RL-75</b> .....	18
Cable trolleys with ball joint <b>WK-RL-90, WK-RL-115</b> .....	18
3 – roller cable trolley with ball joint for rope Ø6-8 mm .....	19
Regulated clamp <b>ZRL</b> .....	19
Cable holders <b>UL-1016, UL-1726, UL-2736</b> .....	19

Rope Ø10-12 mm



Cable trolleys with ball joint <b>WK-RL2-80</b> .....	20
Cable trolleys with ball joint <b>WK-RL2-115, WK-RL2-135</b> .....	20
3 – roller cable trolley with ball joint for rope Ø10-12 mm .....	20
Regulated clamp <b>ZRL</b> .....	21
Cable holders <b>UL-1016, UL-1726, UL-2736</b> .....	21



Towing clamp without roller <b>ZZL-1</b> .....	22
Towing clamp with roller <b>ZZRL-1</b> .....	22
Towing arm <b>ZL...</b> .....	22

Rope Ø6-8 mm

Rope Ø10-12 mm



Control unit trolleys with terminal box .....	23
Control unit trolleys with multipolar junction .....	23

## Accessories for cable trolleys

Mounting plate <b>PM</b> .....	24
Mount with ball joint <b>MPK</b> .....	24
Poliamide rollers <b>RL40..., RL50...</b> .....	24
Steel rollers <b>RLS40..., RLS50...</b> .....	24
Plastic cable supports .....	25
Steel cable supports .....	25
Separators .....	25
Plastic conical nut .....	25
Technical chain <b>VICTOR DIN 5686</b> .....	26
Technical chain <b>DIN 5685</b> .....	26
Technical chain (stainless steel) <b>DIN 766</b> .....	26
Snap hooks .....	26
Twisted link .....	26



Cables for crane industry – general information .....	27
Cable glands - general information .....	27

Steel rope power supply system selection .....	28-29
--	-------

# Cable trolleys and accessories for steel rope track



## General utilization conditions and selection rules of mobile receivers' supply systems

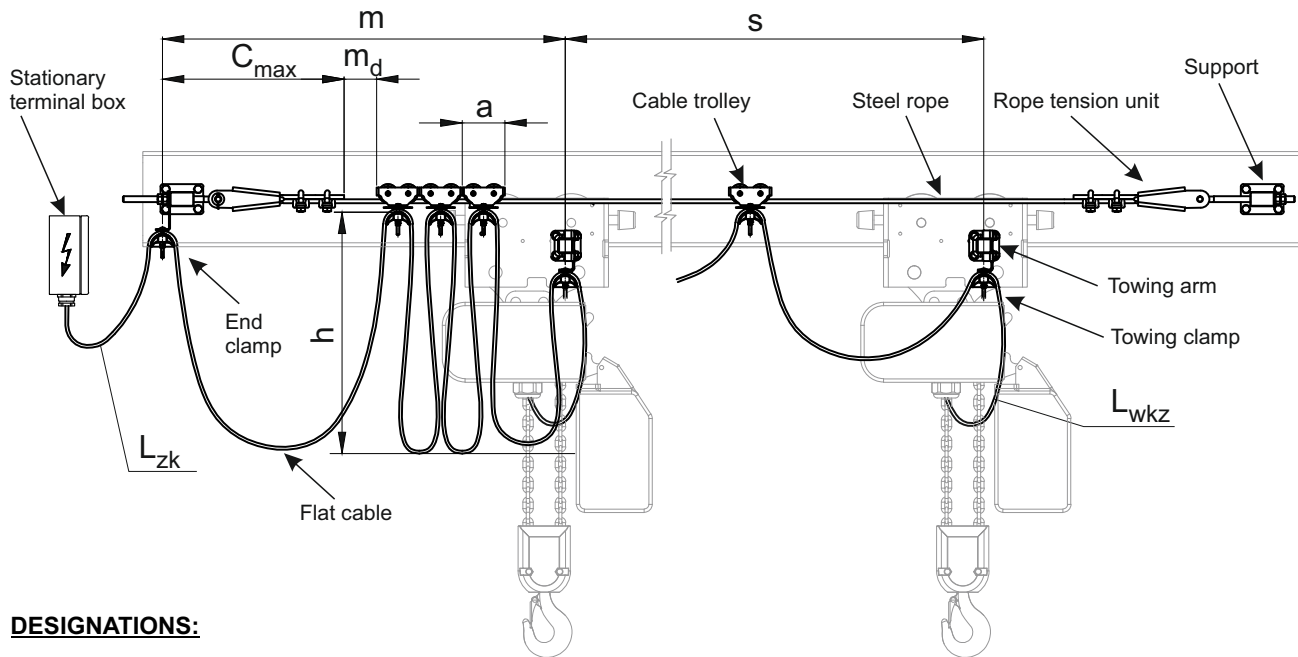
Cable trolleys were designed to work in normal conditions, such as:

- environment: dry (humidity up to 70%), non - aggressive
- workplace: open or closed area

Provisions preventing accidents should be considered when designing the supply system.

UNILIFT reserve the right to make changes to the design of products included in the catalog.

## Selection of supply line parameters



### DESIGNATIONS:

- s** - length of towing trolley route [m]
- a** - length of cable trolley [m]
- z** - number of cable trolleys
- n** - number of loops
- h** - cable loop height [m]
- m** - length of trolleys storage area [m]
- m<sub>d</sub>** - trolley storage area length addition  
(minimum **m<sub>d</sub>** = **a**) [m]
- f** - cable length addition coefficient  $f = 1,10$
- C** - length of trolley storage area dead zone [m]
  - for rope tension unit **ZNL-12**  $C_{max} = 0,40$  [m]
  - for rope tension unit **ZNL-18**  $C_{max} = 0,51$  [m]
  - for rope tension unit **ZNL-20**  $C_{max} = 0,55$  [m]
- D** - cable support diameter [m] – (for flat cables)
- K** - size coefficient – for round cables
  - for holder UL-1016 -  $K = 0,06$
  - for holder UL-1726 -  $K = 0,09$
  - for holder UL-2736 -  $K = 0,15$
- L** - length of supply wire from middle of the end clamp to middle of the towing trolley [m]  
(without connecting sections **L<sub>zk</sub>** and **L<sub>wkz</sub>**)
- L<sub>zk</sub>** - cable length from end clamp to crane contact box [m]
- L<sub>wkz</sub>** - cable length from towing trolley to actuator contact box [m]
- L<sub>c</sub>** - total cable length [m]  
(with connecting sections **L<sub>zk</sub>** and **L<sub>wkz</sub>**)

### RELATIONS:

**Number of loops**  
(for flat cables)

$$n = \frac{f \cdot (s + m_d)}{2 \cdot h - f \cdot a + 1,25 \cdot D}$$

**Number of loops**  
(for round cables)

$$n = \frac{f \cdot (s + m_d)}{2 \cdot h - f \cdot a + K}$$

**Number of trolleys**  
(without towing trolley & end clamp)

$$z = n - 1$$

**Length of trolleys storage area**

$$m = n \cdot a + m_d + C$$

**Length of supply wire**

(without connecting sections **L<sub>zk</sub>** and **L<sub>wkz</sub>**)

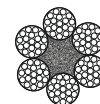
$$L = (s + m) \cdot f$$

**Total length of supply wire**

(with connecting sections **L<sub>zk</sub>** and **L<sub>wkz</sub>**)

$$L_c = L + L_{zk} + L_{wkz}$$





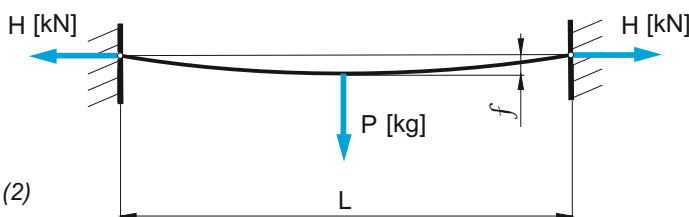
## Tensile force calculation

Steel rope selection must be preceded by horizontal component of tensile force  $H$  calculation.

Tensile force can be calculated according to formula:

$$H = 0,125 \cdot 10^{-2} \cdot \alpha \cdot \varphi \cdot P \quad [\text{kN}] \quad (1)$$

$$\alpha = \frac{L}{f} \quad (2)$$



- $H$  - tensile force [kN]
- $P$  - overall load (weight of rope + trolleys + other components) [kg]
- $\varphi$  - dynamic load coefficient  $j = 1,2$
- $L$  - distance between mounting points [m]
- $\alpha$  - overhang coefficient
- $f$  - overhang (%  $\cdot L$ ) [m]

## Steel rope selection

Rope selection stages:

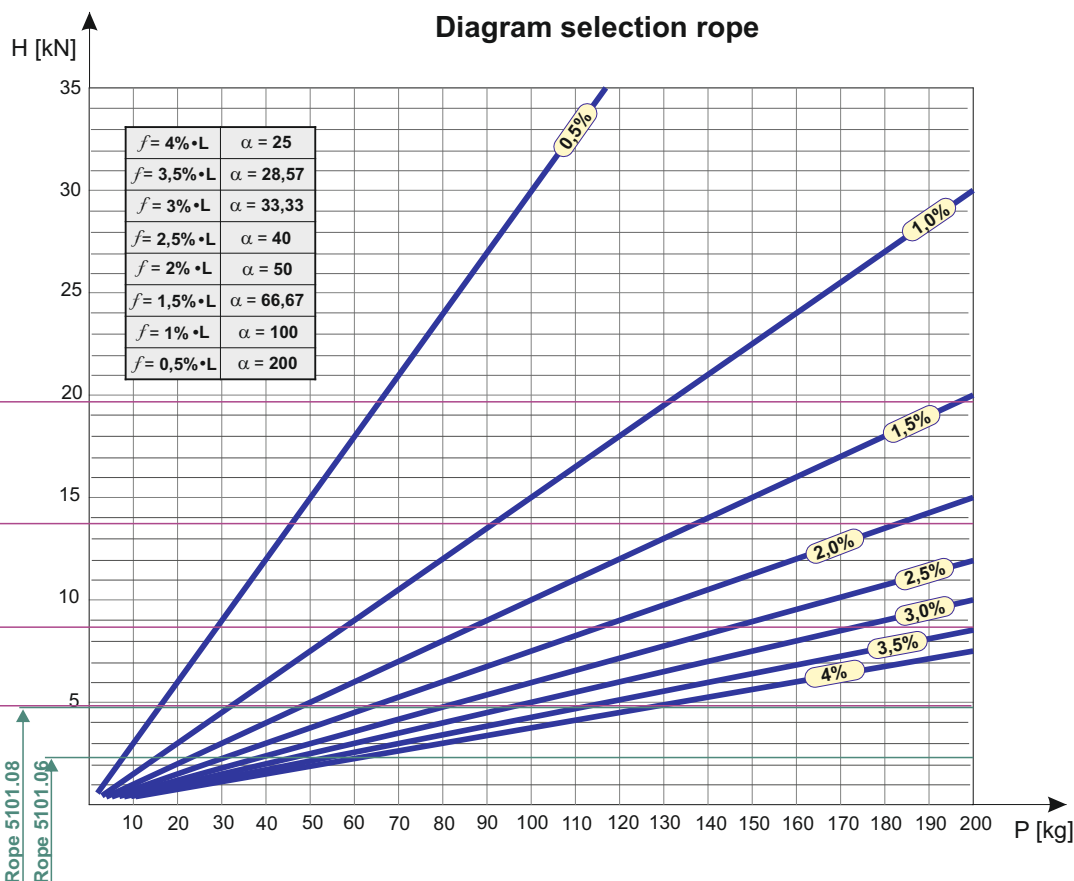
- define acceptable overhang  $f$  (%  $\cdot L$ ) [m],  $f \leq 4\% \cdot L$
- define overall load  $P$  [kg]
- calculate tensile force  $H$  [kN] acc. (1)
- choose appropriate rope due to acceptable tension force  $F_z$  [kN]

$$F_z = \frac{F_M}{n} \leq H \quad [\text{kN}] \quad (3)$$

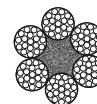
- $F_z$  - acceptable tension force [kN]
- $F_M$  - min. breaking force [kN]
- $n$  - safety coefficient for anchored ropes  $n = 4$

Example:

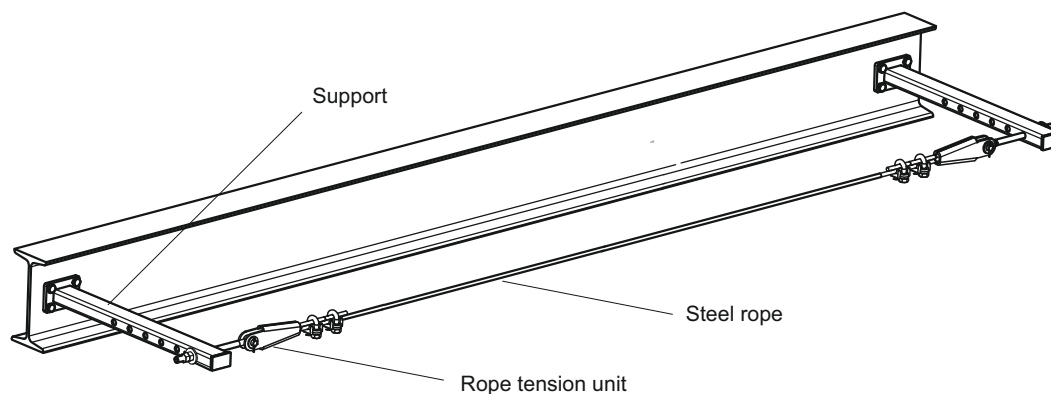
$L = 50$  [m]  
 $P = 110$  [kg]  
 $f = 1,6\% \quad L = 0,8$  [m]  
 $H \cong 10,31$  [kN]  
 Rope cat. . **5100.10**



# Cable trolleys and accessories for steel rope track



## Steel rope mounting

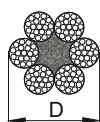


## Steel ropes DIN3060 (PN-69/M-80206) - without PVC sheath



Rope construction: **6x19+Fc [6x(1+6+12)+Fc]**

**Material:** rope – galvanized steel



The table contains rope producer's data

<sup>\*)</sup> for nominal durability 1770 [N/mm]

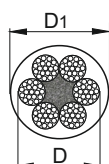
Catalog No.	Type	Rope	Diameter [mm]	Weight [kg/m]	Min. breaking force $F_M$ <sup>*)</sup> [kN]	Acceptable tensile force $F_Z$ [kN]
5100.06	L0606x19	Without PVC sheath	6,0	0,125	19,60	4,90
5100.08	L0806x19		8,0	0,221	34,80	8,70
5100.10	L1006x19		10,0	0,346	54,40	13,60
5100.12	L1206x19		12,0	0,498	78,30	19,60

## Steel ropes DIN3055 - with PVC sheath



Rope construction: **6x7+Fc [6x(1+6)+Fc]**

**Material:** rope – galvanized steel  
sheath – PVC

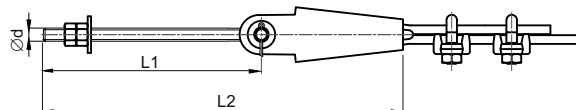


The table contains rope producer's data

<sup>\*)</sup> for nominal durability 1770 [N/mm]

Catalog No.	Type	Rope	Diameter [mm]		Weight [kg/m]	Min. breaking force $F_M$ <sup>*)</sup> [kN]	Acceptable tensile force $F_Z$ [kN]
			D	D1			
5101.06	LP040606x07	With PVC sheath	4,0	6,0	0,084	8,70	2,20
5101.08	LP060806x07		6,0	8,0	0,168	19,60	4,90

## RTU - Rope tension unit

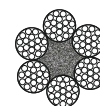


**Material:** galvanized steel

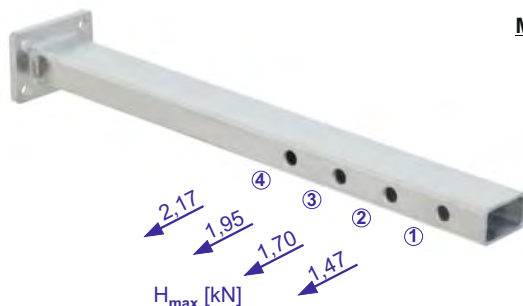
Rope tension unit includes:  
- rope connector acc. DIN 15315  
- eyebolt  
- two rope clamps

Catalog No.	Type	Diameter rope [mm]	Thread	Dimensions [mm]		Weight [kg]
				L1	L2	
5110.10	ZNL-10	6	M10	180	260	0,38
5110.12	ZNL-12	6 - 8	M12	200	330	0,68
5110.16	ZNL-16	10	M16	260	420	1,55
5110.20	ZNL-20	12	M20	260	460	2,95

# Cable trolleys and accessories for steel rope track

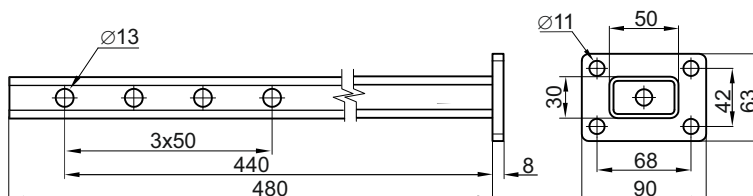


## Support WL10



**Material:** dip galvanized steel

Catalog No.	Type	Weight [kg]
5004.00	WL10	1,92

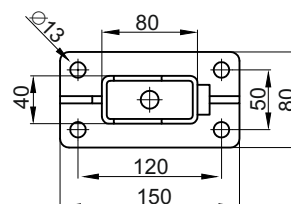
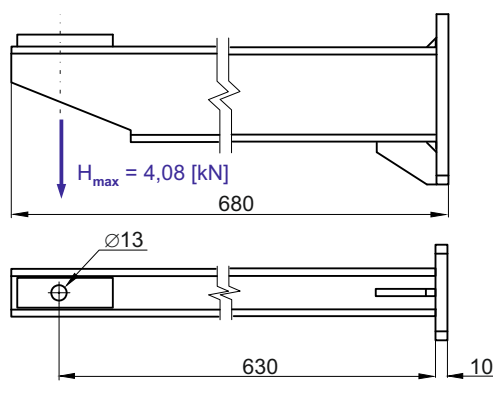


## Support WL21



**Material:** dip galvanized steel

Catalog No.	Type	Weight [kg]
5004.10	WL21	5,40

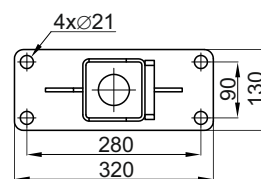
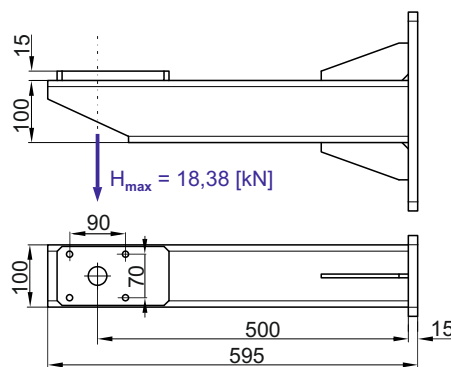


## Support WL31



**Material:** dip galvanized steel

Catalog No.	Type	Weight [kg]
5004.20	WL31	14,20

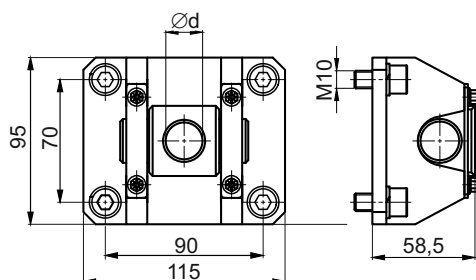


! Support arm **WL31** used together with RTU **ZNL-...** (side 6) and with RTU bracket **UM1** (side 7).

## RTU socket



**Material:** galvanized steel



Catalog No.	Type	Diameter d [mm]	Weight [kg]
5004.50	GZN-1	13	1,810
5004.51	GZN-2	17	1,815
5004.52	GZN-3	21	1,820

! Rope tension unit (RTU) bracket **UM1** used together with RTU **ZNL-...** (side 6) and with support arm **WL31** (side 7).

# Cable trolleys and accessories for flat cables - steel rope track



## Cable trolleys for flat cables sign example

### Cable trolleys sign example

**WK-PLG-75x76xD50T**

Type \_\_\_\_\_  
 Pans \_\_\_\_\_  
 Length cable support mm \_\_\_\_\_  
 Cable support width mm \_\_\_\_\_  
 Cable support diameter mm \_\_\_\_\_  
 Plastic cable support (without letter T - steel cable support) \_\_\_\_\_

### 3-roller cable trolleys sign example

**WK-PL12B-90x76xD63T**  
**WK-PL08A-90x76xD63T**

Type \_\_\_\_\_  
 Determination of the steel rope **08** - for rope  $\varnothing$ 6-8 mm  
**12** - for rope  $\varnothing$ 10-12 mm  
 Combinations rollers \_\_\_\_\_  
 Length cable support mm \_\_\_\_\_  
 Cable support width mm \_\_\_\_\_  
 Cable support diameter mm \_\_\_\_\_  
 Plastic cable support (without letter T - steel cable support) \_\_\_\_\_

### End clamps sign example

**ZKL-76xD63T**

Type \_\_\_\_\_  
 Cable support width mm \_\_\_\_\_  
 Cable support diameter mm \_\_\_\_\_  
 Plastic cable support (without letter T - steel cable support) \_\_\_\_\_

## Cable trolleys for round cables sign example

### Cable trolleys sign example

**WK-RL2G-115**  
**WK-RLG-75**

Type \_\_\_\_\_  
 Pans \_\_\_\_\_  
 Length cable support mm \_\_\_\_\_

### 3-roller cable trolleys sign example

**WK-PL12B-90**  
**WK-PL08A-90**

Type \_\_\_\_\_  
 Determination of the steel rope **08** - for rope  $\varnothing$ 6-8 mm  
**12** - for rope  $\varnothing$ 10-12 mm  
 Combinations rollers \_\_\_\_\_  
 Length cable support mm \_\_\_\_\_

### End clamps sign example

**ZRL**

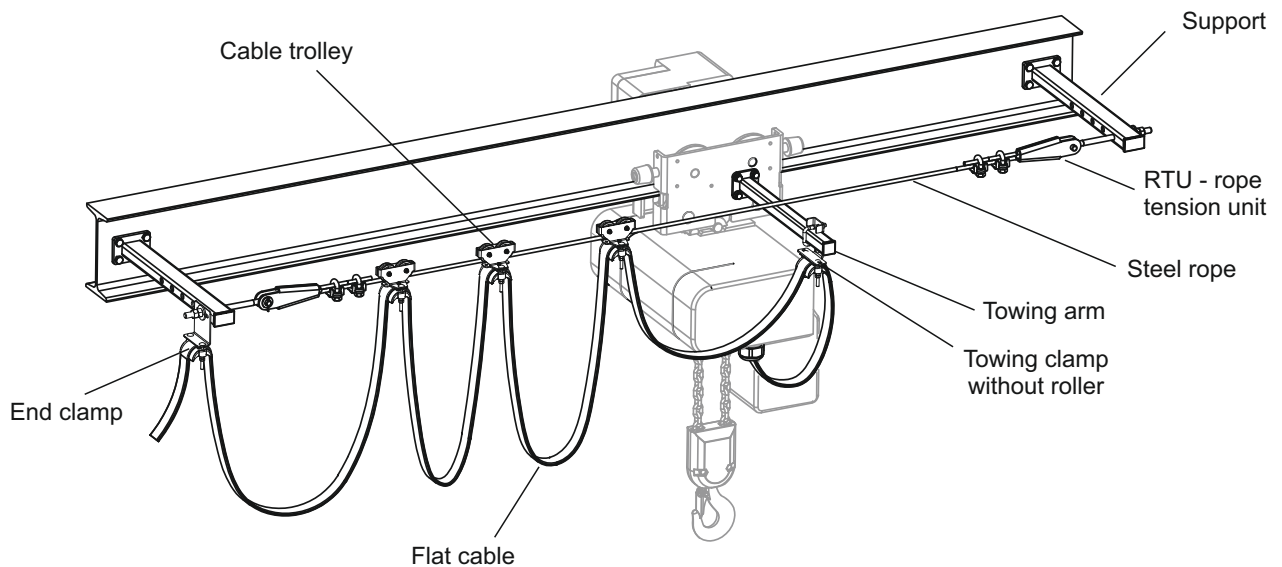
Type \_\_\_\_\_



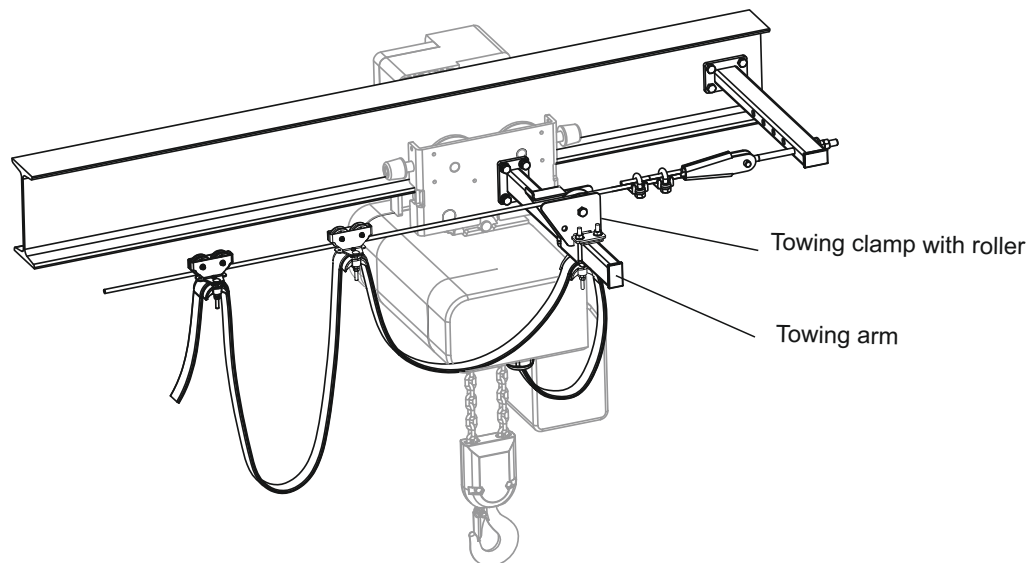
# Cable trolleys and accessories for flat cables - steel rope track



## Components of supply system with towing clamp without roller



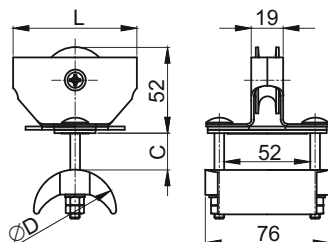
## Components of supply system with towing clamp with roller



# Cable trolleys and accessories for flat cables - steel rope $\varnothing 6-8$ mm track



## Cable trolleys with plastic cable support L=75 mm



**Material:**

- body** - galvanized steel or stainless steel 1.4301
- rollers** - polyamide PA
- pans** - polymer (G signed)
- cable support** - polyamide PA (polypropylene PP - on request)
- separator** - polyamide PA (polypropylene PP - on request)
- axle** - stainless steel 1.4301
- bolts, nuts** - galvanized steel or stainless steel 1.4301
- nuts** - polyamide PA (for polyamide cable support D50T)

Maximum trolley speed: **50 m/min**

Maximum trolley load (standard version): **6 kg**

Maximum trolley load (stainless version): **4 kg**

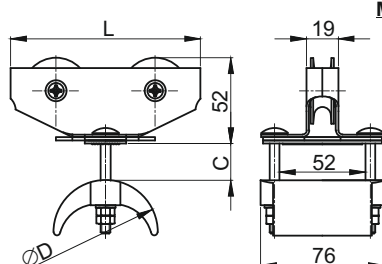
! It's suggested to use one roller trolleys alternately with two roller trolleys

N - stainless version

Catalog No.	Type	Dimensions [mm]			Weight [kg]
		L	D	C <sub>max</sub>	
5002.11	WK-PL-75x76xD50T	75	50	12	0,220
5002.11-G	WK-PLG-75x76xD50T				

Catalog No.	Type
5002.11-N	WK-PL-75x76xD50T-N
5002.11-GN	WK-PLG-75x76xD50T-N

## Cable trolleys with plastic cable support L=90 mm, L=115 mm



**Material:**

- body** - galvanized steel or stainless steel 1.4301
- rollers** - polyamide PA
- pans** - polymer (G signed)
- cable support** - polyamide PA (polypropylene PP - on request)
- separator** - polyamide PA (polypropylene PP - on request)
- axle** - stainless steel 1.4301
- bolts, nuts** - galvanized steel or stainless steel 1.4301
- nuts** - polyamide PA (for polyamide cable support D50T)

Maximum trolley speed: **50 m/min**

Maximum trolley load (standard version): **10 kg**

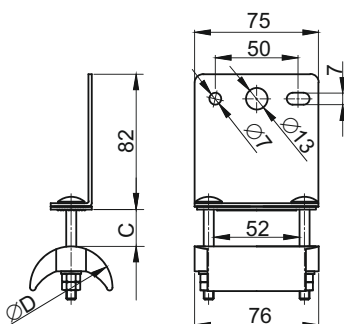
Maximum trolley load (stainless version): **6 kg**

N - stainless version

Catalog No.	Type	Dimensions [mm]			Weight [kg]
		L	D	C <sub>max</sub>	
5002.01	WK-PL-90x76xD50T	90	50	12	0,260
5002.01-G	WK-PLG-90x76xD50T				
5002.13	WK-PL-115x76xD63T	115	63	24	0,280
5002.13-G	WK-PLG-115x76xD63T				
5002.31	WK-PL-115x76xD80T		80	15	0,290
5002.31-G	WK-PLG-115x76xD80T				

Catalog No.	Type
5002.01-N	WK-PL-90x76xD50T-N
5002.01-GN	WK-PLG-90x76xD50T-N
5002.13-N	WK-PL-115x76xD63T-N
5002.13-GN	WK-PLG-115x76xD63T-N
5002.31-N	WK-PL-115x76xD80T-N
5002.31-GN	WK-PLG-115x76xD80T-N

## End clamps with plastic cable support ZKL-76xD...



**Material:**

- body** - galvanized steel or stainless steel 1.4301
- cable support** - polyamide PA (polypropylene PP - on request)
- separator** - polyamide PA (polypropylene PP - on request)
- bolts, nuts** - galvanized steel or stainless steel 1.4301
- nuts** - polyamide PA (for polyamide cable support D50T)

Maximum clamp load (standard version): **16 kg**

Maximum clamp load (stainless version): **10 kg**

N - stainless version

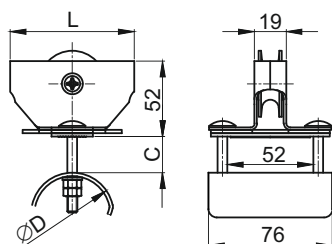
Catalog No.	Type	Dimensions [mm]		Weight [kg]
		D	C <sub>max</sub>	
5003.10	ZKL-76xD50T	50	15	0,190
5003.11	ZKL-76xD63T	63	24	0,200
5003.12	ZKL-76xD80T	80	15	0,210

Catalog No.	Type
5003.10-N	ZKL-76xD50T-N
5003.11-N	ZKL-76xD63T-N
5003.12-N	ZKL-76xD80T-N

# Cable trolleys and accessories for flat cables - steel rope $\varnothing 6-8$ mm track



## Cable trolleys with steel cable support L=75 mm



<b>Material:</b>	<b>body</b>	- galvanized steel or stainless steel 1.4301
	<b>rollers</b>	- polyamide PA
	<b>pans</b>	- polymer ( <i>G signed</i> )
	<b>cable support</b>	- galvanized steel or stainless steel 1.43,1
	<b>separator</b>	- polyamide PA ( <i>polypropylene PP - on request</i> )
	<b>axle</b>	- stainless steel 1.4301
	<b>bolts, nuts</b>	- galvanized steel or stainless steel 1.4301

Maximum trolley speed: **50 m/min**

Maximum trolley load (*standard version*): **6 kg**

Maximum trolley load (*stainless version*): **4 kg**

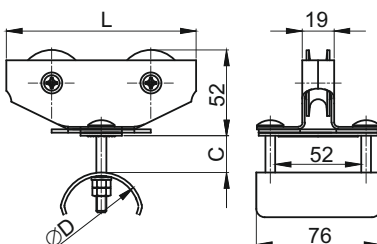
! It's suggested to use one roller trolleys alternately with two roller trolleys

N - stainless version

Catalog No.	Type	Dimensions [mm]			Weight [kg]
		L	D	C <sub>max</sub>	
5002.21	WK-PL-75x76xD50	75	50	12	0,295
5002.21-G	WK-PLG-75x76xD50				

Catalog No.	Type
5002.21-N	WK-PL-75x76xD50-N
5002.21-GN	WK-PLG-75x76xD50-N

## Cable trolleys with steel cable support L=90 mm, L=115 mm



<b>Material:</b>	<b>body</b>	- galvanized steel or stainless steel 1.4301
	<b>rollers</b>	- polyamide PA
	<b>pans</b>	- polymer ( <i>G signed</i> )
	<b>cable support</b>	- galvanized steel or stainless steel 1.43,1
	<b>separator</b>	- polyamide PA ( <i>polypropylene PP - on request</i> )
	<b>axle</b>	- stainless steel 1.4301
	<b>bolts, nuts</b>	- galvanized steel or stainless steel 1.4301

Maximum trolley speed: **50 m/min**

Maximum trolley load (*standard version*): **10 kg**

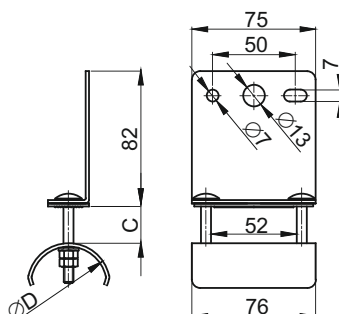
Maximum trolley load (*stainless version*): **6 kg**

N - stainless version

Catalog No.	Type	Dimensions [mm]			Weight [kg]
		L	D	C <sub>max</sub>	
5002.03	WK-PL-90x76xD50	90	50	15	0,320
5002.03-G	WK-PLG-90x76xD50				
5002.23	WK-PL-115x76xD50	115	50	24	0,350
5002.23-G	WK-PLG-115x76xD50				

Catalog No.	Type
5002.03-N	WK-PL-90x76xD50-N
5002.03-GN	WK-PLG-90x76xD50-N
5002.23-N	WK-PL-115x76xD50-N
5002.23-GN	WK-PLG-115x76xD50-N

## End clamp with steel cable support ZKL-76xD...



<b>Material:</b>	<b>body</b>	- galvanized steel or stainless steel 1.4301
	<b>cable support</b>	- galvanized steel or stainless steel 1.43,1
	<b>separator</b>	- polyamide PA ( <i>polypropylene PP - on request</i> )
	<b>bolts, nuts</b>	- galvanized steel or stainless steel 1.4301

Maximum clamp load (*standard version*): **16 kg**

Maximum clamp load (*stainless version*): **10 kg**

N - stainless version

Catalog No.	Type	Dimensions [mm]		Weight [kg]
		D	C <sub>max</sub>	
5003.16	ZKL-76xD50	50	24	0,270

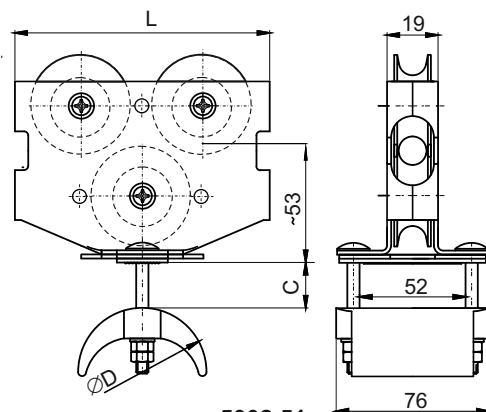
Catalog No.	Type
5003.16-N	ZK-L-76xD50-N

KL 052018 EN

# Cable trolleys and accessories for flat cables - steel rope $\varnothing 6-8$ mm track

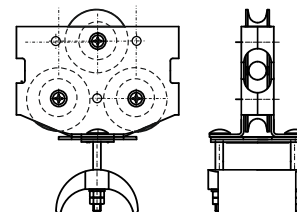


## 3 – roller cable trolleys with plastic cable support for steel rope $\varnothing 6-8$ mm



5002.51

Different rollers combination is possible



5002.52

<b>Material:</b>	<b>body</b>	- galvanized steel or stainless steel 1.4301
	<b>rollers</b>	- polyamide PA
	<b>pans</b>	- polymer
	<b>cable support</b>	- polyamide PA (polypropylene PP - on request)
	<b>separator</b>	- polyamide PA (polypropylene PP - on request)
	<b>axle</b>	- stainless steel 1.4301
	<b>bolts, nuts</b>	- galvanized steel or stainless steel 1.4301
	<b>nuts</b>	- polyamide PA (for polyamide cable support D50T)

Maximum trolley speed: **50 m/min**

Maximum trolley load:  
- for **5002.51** (standard version): - **10 kg**  
(stainless version): - **6 kg**  
- for **5002.52** (standard version): - **6 kg**  
(stainless version): - **4 kg**

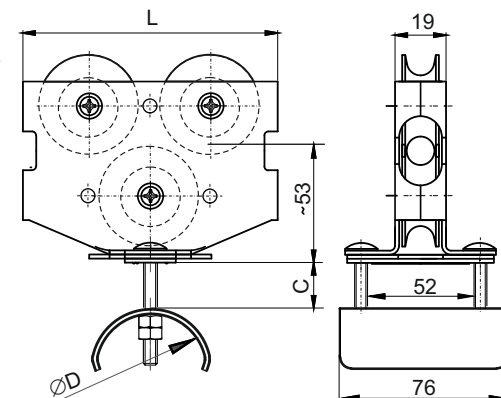
! 3-roller cable trolleys standard include a pans polymer

Catalog No.	Type	Dimensions [mm]			Weight [kg]
		L	D	C <sub>max</sub>	
5002.51	WK-PL08A-90x76xD50T	90	50	12	0,440
5002.52	WK-PL08B-90x76xD50T				

N - stainless version

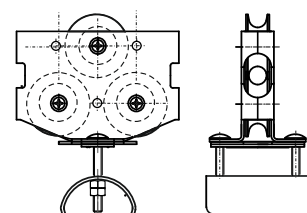
Catalog No.	Type
5002.51-N	WK-PL08A-90x76xD50T-N
5002.52-N	WK-PL08B-90x76xD50T-N

## 3 – roller cable trolleys with steel cable support for steel rope $\varnothing 6-8$ mm



5002.55

Different rollers combination is possible



5002.56

<b>Material:</b>	<b>body</b>	- galvanized steel or stainless steel 1.4301
	<b>rollers</b>	- polyamide PA
	<b>pans</b>	- polymer
	<b>cable support</b>	- galvanized steel or stainless steel 1.43,1
	<b>separator</b>	- polyamide PA (polypropylene PP - on request)
	<b>axle</b>	- stainless steel 1.4301
	<b>bolts, nuts</b>	- galvanized steel or stainless steel 1.4301

Maximum trolley speed: **50 m/min**

Maximum trolley load:  
- for **5002.55** (standard version): - **10 kg**  
(stainless version): - **6 kg**  
- for **5002.56** (standard version): - **6 kg**  
(stainless version): - **4 kg**

! 3-roller cable trolleys standard include a pans polymer

Catalog No.	Type	Dimensions [mm]			Weight [kg]
		L	D	C <sub>max</sub>	
5002.55	WK-PL08A-90x76xD50	90	50	15	0,510
5002.56	WK-PL08B-90x76xD50				

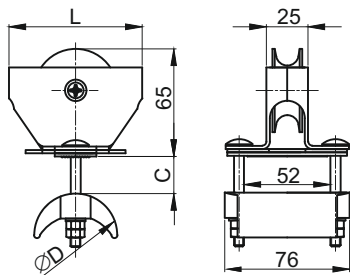
N - stainless version

Catalog No.	Type
5002.55-N	WK-PL08A-90x76xD50-N
5002.56-N	WK-PL08B-90x76xD50-N

# Cable trolleys and accessories for flat cables - steel rope $\varnothing 10-12$ mm track



## Cable trolleys with plastic cable support L=80 mm



**Material:**

- body** - galvanized steel or stainless steel 1.4301
- rollers** - polyamide PA
- pans** - polymer (G signed)
- cable support** - polyamide PA (polypropylene PP - on request)
- separator** - polyamide PA (polypropylene PP - on request)
- axle** - stainless steel 1.4301
- bolts, nuts** - galvanized steel or stainless steel 1.4301
- nuts** - polyamide PA (for polyamide cable support D50T)

Maximum trolley speed: **50 m/min**

Maximum trolley load (standard version): **10 kg**

Maximum trolley load (stainless version): **6 kg**

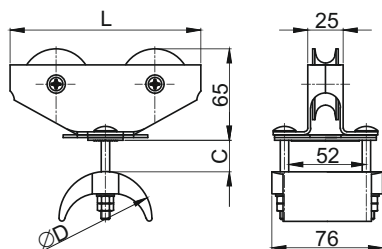
! It's suggested to use one roller trolleys alternately with two roller trolleys

N - stainless version

Catalog No.	Type	Dimensions [mm]			Weight [kg]
		L	D	C <sub>max</sub>	
5002.15	WK-PL2-80x76xD50T	80	50	15	0,275
5002.15-G	WK-PL2G-80x76xD50T				

Catalog No.	Type
5002.15-N	WK-PL2-80x76xD50T-N
5002.15-GN	WK-PL2G-80x76xD50T-N

## Cable trolleys with plastic cable support L=115 mm, L=135 mm



**Material:**

- body** - galvanized steel or stainless steel 1.4301
- rollers** - polyamide PA
- pans** - polymer (G signed)
- cable support** - polyamide PA (polypropylene PP - on request)
- separator** - polyamide PA (polypropylene PP - on request)
- axle** - stainless steel 1.4301
- bolts, nuts** - galvanized steel or stainless steel 1.4301

Maximum trolley speed: **50 m/min**

Maximum trolley load (standard version): **16 kg**

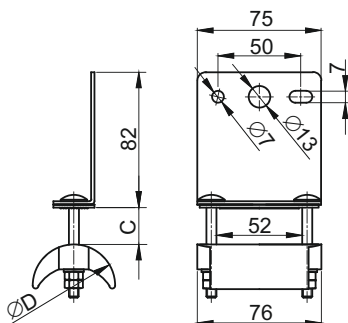
Maximum trolley load (stainless version): **10 kg**

N - stainless version

Catalog No.	Type	Dimensions [mm]			Weight [kg]
		L	D	C <sub>max</sub>	
5002.05	WK-PL2-115x76xD63T	115	63	24	0,360
5002.05-G	WK-PL2G-115x76xD63T				
5002.17	WK-PL2-135x76xD63T	135	63	30	0,380
5002.17-G	WK-PL2G-135x76xD63T				
5002.35	WK-PL2-135x76xD80T		80	24	0,390
5002.35-G	WK-PL2G-135x76xD80T				

Catalog No.	Type
5002.05-N	WK-PL2-115x76xD63T-N
5002.05-GN	WK-PL2G-115x76xD63T-N
5002.17-N	WK-PL2-135x76xD63T-N
5002.17-GN	WK-PL2G-135x76xD63T-N
5002.35-N	WK-PL2-135x76xD80T-N
5002.35-GN	WK-PL2G-135x76xD80T-N

## End clamps with plastic cable support ZKL-76xD...



**Material:**

- body** - galvanized steel or stainless steel 1.4301
- cable support** - polyamide PA (polypropylene PP - on request)
- separator** - polyamide PA (polypropylene PP - on request)
- bolts, nuts** - galvanized steel or stainless steel 1.4301
- nuts** - polyamide PA (for polyamide cable support D50T)

Maximum clamp load (standard version): **16 kg**

Maximum clamp load (stainless version): **10 kg**

N - stainless version

Catalog No.	Type	Dimensions [mm]		Weight [kg]
		D	C <sub>max</sub>	
5003.10	ZKL-76xD50T	50	15	0,190
5003.11	ZKL-76xD63T	63	24	0,200
5003.12	ZKL-76xD80T	80	15	0,210

Catalog No.	Type
5003.10-N	ZKL-76xD50T-N
5003.11-N	ZKL-76xD63T-N
5003.12-N	ZKL-76xD80T-N

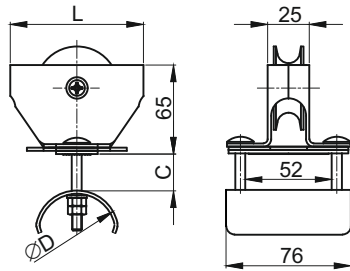
KL 052018 EN



# Cable trolleys and accessories for flat cables - steel rope $\varnothing 10-12$ mm track



## Cable trolleys with steel cable support L=80 mm



<b>Material:</b>	<b>body</b>	- galvanized steel or stainless steel 1.4301
	<b>rollers</b>	- polyamide PA
	<b>pans</b>	- polymer (G signed)
	<b>cable support</b>	- galvanized steel or stainless steel 1.43,1
	<b>separator</b>	- polyamide PA (polypropylene PP - on request)
	<b>axle</b>	- stainless steel 1.4301
	<b>bolts, nuts</b>	- galvanized steel 1.4301

Maximum trolley speed: **50 m/min**

Maximum trolley load (standard version): **10 kg**

Maximum trolley load (stainless version): **6kg**

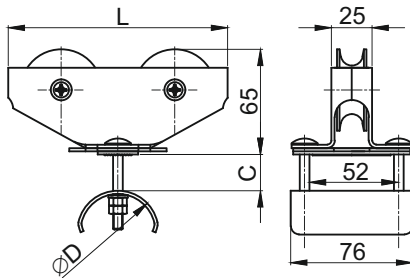
**!** It's suggested to use one roller trolleys alternately with two roller trolleys

**N - stainless version**

Catalog No.	Type	Dimensions [mm]			Weight [kg]
		L	D	C <sub>max</sub>	
5002.25	WK-PL2-80x76xD50	80	50	15	0,350
5002.25-G	WK-PL2G-80x76xD50				

Catalog No.	Type
5002.25-N	WK-PL2-80x76xD50-N
5002.25-GN	WK-PL2G-80x76xD50-N

## Cable trolleys with steel cable support L=115 mm, L=135 mm



<b>Material:</b>	<b>body</b>	- galvanized steel or stainless steel 1.4301
	<b>rollers</b>	- polyamide PA
	<b>pans</b>	- polymer (G signed)
	<b>cable support</b>	- galvanized steel or stainless steel 1.43,1
	<b>separator</b>	- polyamide PA (polypropylene PP - on request)
	<b>axle</b>	- stainless steel 1.4301
	<b>bolts, nuts</b>	- galvanized steel or stainless steel 1.4301

Maximum trolley speed: **50 m/min**

Maximum trolley load (standard version): **16 kg**

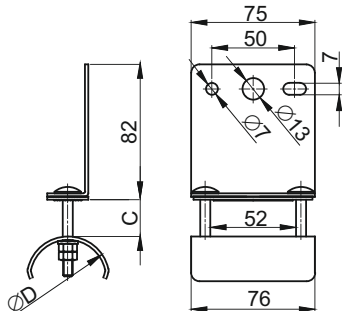
Maximum trolley load (stainless version): **10 kg**

**N - stainless version**

Catalog No.	Type	Dimensions [mm]			Weight [kg]
		L	D	C <sub>max</sub>	
5002.07	WK-PL2-115x76xD50	115	50	30	0,410
5002.07-G	WK-PL2G-115x76xD50				
5002.27	WK-PL2-135x76xD50	135	50	35	0,445
5002.27-G	WK-PL2G-135x76xD50				

Catalog No.	Type
5002.07-N	WK-PL2-115x76xD50-N
5002.07-GN	WK-PL2G-115x76xD50-N
5002.27-N	WK-PL2-135x76xD50-N
5002.27-GN	WK-PL2G-135x76xD50-N

## End clamp with steel cable support ZKL-76xD...



<b>Material:</b>	<b>body</b>	- galvanized steel or stainless steel 1.4301
	<b>cable support</b>	- galvanized steel or stainless steel 1.43,1
	<b>separator</b>	- polyamide PA (polypropylene PP - on request)
	<b>bolts, nuts</b>	- galvanized steel or stainless steel 1.4301

Maximum clamp load (standard version): **16 kg**

Maximum clamp load (stainless version): **10 kg**

**N - stainless version**

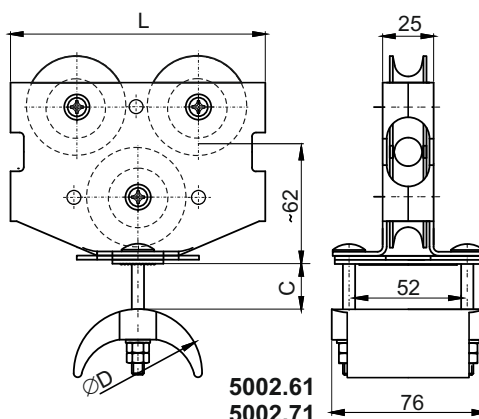
Catalog No.	Type	Dimensions [mm]		Weight [kg]
		D	C <sub>max</sub>	
5003.16	ZKL-76xD50	50	24	0,270

Catalog No.	Type
5003.16-N	ZK-L-76xD50-N

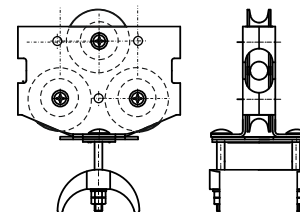
# Cable trolleys and accessories for flat cables - steel rope $\varnothing 10-12$ mm track



## 3 – roller cable trolleys with plastic cable support for steel rope $\varnothing 10-12$ mm



Different rollers combination is possible



5002.62  
5002.72

**Material:** body - galvanized steel or stainless steel 1.4301  
rollers - polyamide PA  
pans - polymer  
cable support - polyamide PA (polypropylene PP - on request)  
separator - polyamide PA (polypropylene PP - on request)  
axle - stainless steel 1.4301  
bolts, nuts - galvanized steel or stainless steel 1.4301

Maximum trolley speed: 50 m/min

Maximum trolley load:  
- for 5002.61, 5002.71 (standard version): - 10 kg  
(stainless version): - 6 kg  
- for 5002.62, 5002.72 (standard version): - 6 kg  
(stainless version): - 4 kg

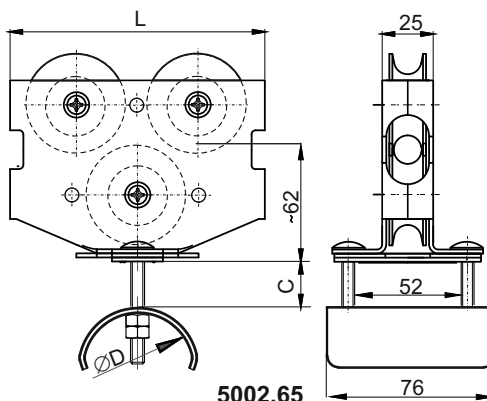
! 3-roller cable trolleys standard include a pans polymer

N - stainless version

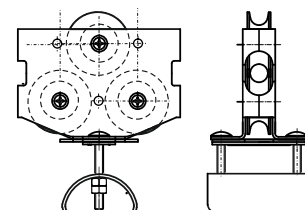
Catalog No.	Type	Dimensions [mm]			Weight [kg]
		L	D	C <sub>max</sub>	
5002.61	WK-PL12A-125x76xD63T	125	63	24	0,560
5002.62	WK-PL12B-125x76xD63T		63	24	
5002.71	WK-PL12A-125x76xD80T		80	18	
5002.72	WK-PL12B-125x76xD80T		80	18	

Catalog No.	Type
5002.61-N	WK-PL12A-125x76xD63T-N
5002.62-N	WK-PL12B-125x76xD63T-N
5002.71-N	WK-PL12A-125x76xD80T-N
5002.72-N	WK-PL12B-125x76xD80T-N

## 3 – roller cable trolleys with steel cable support for steel rope $\varnothing 10-12$ mm



Different rollers combination is possible



5002.66

5002.65

**Material:** body - galvanized steel or stainless steel 1.4301  
rollers - polyamide PA  
pans - polymer  
cable support - galvanized steel or stainless steel 1.43,1  
separator - polyamide PA (polypropylene PP - on request)  
axle - stainless steel 1.4301  
bolts, nuts - galvanized steel or stainless steel 1.4301

Maximum trolley speed: 50 m/min

Maximum trolley load:  
- for 5002.65 (standard version): - 10 kg  
(stainless version): - 6 kg  
- for 5002.66 (standard version): - 6 kg  
(stainless version): - 4 kg

! 3-roller cable trolleys standard include a pans polymer

N - stainless version

Catalog No.	Type	Dimensions [mm]			Weight [kg]
		L	D	C <sub>max</sub>	
5002.65	WK-PL12A-125x76xD50	125	50	35	0,630
5002.66	WK-PL12B-125x76xD50				

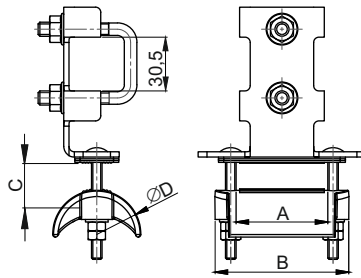
Catalog No.	Type
5002.65-N	WK-PL12A-125x76xD50-N
5002.66-N	WK-PL12B-125x76xD50-N

KL 052018 EN

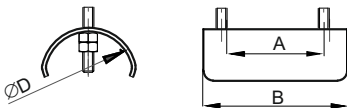
# Cable trolleys and accessories for flat cables - steel rope track



## Towing clamp without roller



Plastic cable support



Steel cable support

### Material:

- body** - galvanized steel
- cable support** - polyamide PA (polypropylene PP - on request)
- separator** - galvanized steel
- bolts, nuts** - polyamide PA (polypropylene PP - on request)
- nuts** - galvanized steel
- nuts** - polyamide PA (for polyamide cable support D50T)

Maximum clamp load: **16 kg**

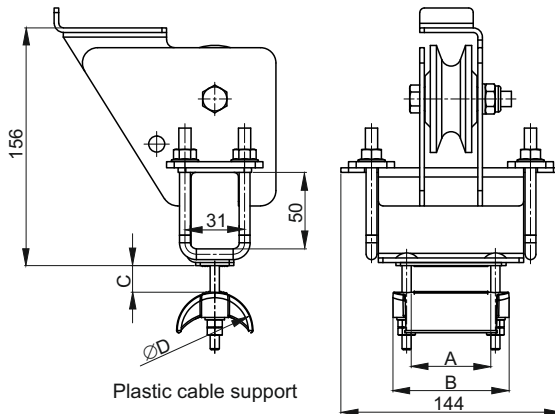
T - plastic cable support

Catalog No.	Type	Dimensions [mm]				Weight [kg]
		D	A	B	C <sub>max</sub>	
5003.20	ZZL-D50T	50	52	76	24	0,28
5003.21	ZZL-D50	50				0,35
5003.23	ZZL-D63T	63				0,30
5003.24	ZZL-D80T	80				0,31



To towing clamp without roller, use towing arm **ZL1-400** or **ZL1-630**

## Towing clamp with roller



Plastic cable support



Steel cable support

### Material:

- body** - galvanized steel
- rollers** - polyamide PA
- pans** - polymer
- cable support** - polyamide PA
- cable support** - (polypropylene PP - on request)
- separator** - galvanized steel
- separator** - polyamide PA
- separator** - (polypropylene PP - on request)
- axle** - stainless steel 1.4301
- bolts, nuts** - galvanized steel
- nuts** - polyamide PA
- nuts** - (for plastic cable support D50T)

Maximum clamp load: **16 kg**



To towing clamp with roller, use towing arm **ZL2-400** or **ZL2-630**

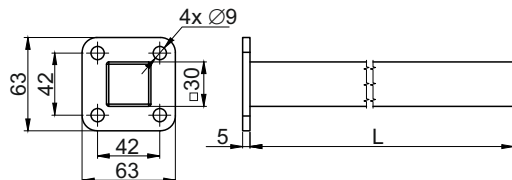
T - plastic cable support

Catalog No.	Type	Dimensions [mm]				Weight [kg]
		D	A	B	C <sub>max</sub>	
5003.30	ZZRL-D50T	50	52	76	24	1,41
5003.31	ZZRL-D50	50				1,48
5003.33	ZZRL-D63T	63				1,42
5003.34	ZZRL-D80T	80				1,45

## Towing arm



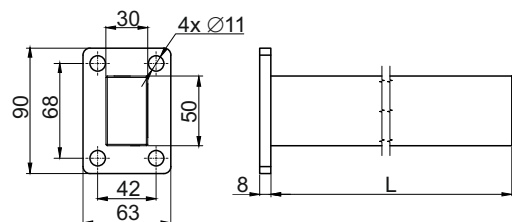
ZL1-...



Towing arm for towing clamps without roller **ZZL-D...**



ZL2-...



Towing arm for towing clamps with roller **ZZRL-D...**

**Material:** cold formed, Sendzimir galvanized steel PN-EN 10327

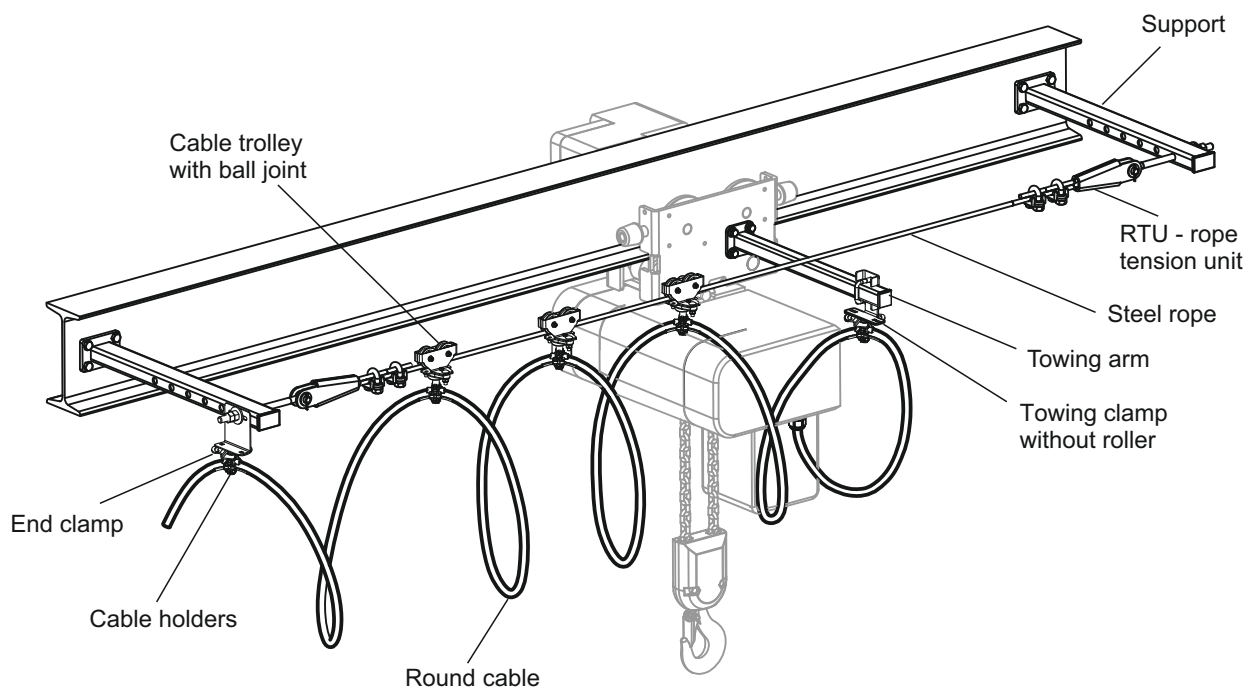
Catalog No.	Type	Weight [kg]
5015.10	ZL1-400	1,23
5015.11	ZL1-630	1,42
5015.15	ZL2-400	1,68
5015.16	ZL2-630	1,94

KL 052018 EN

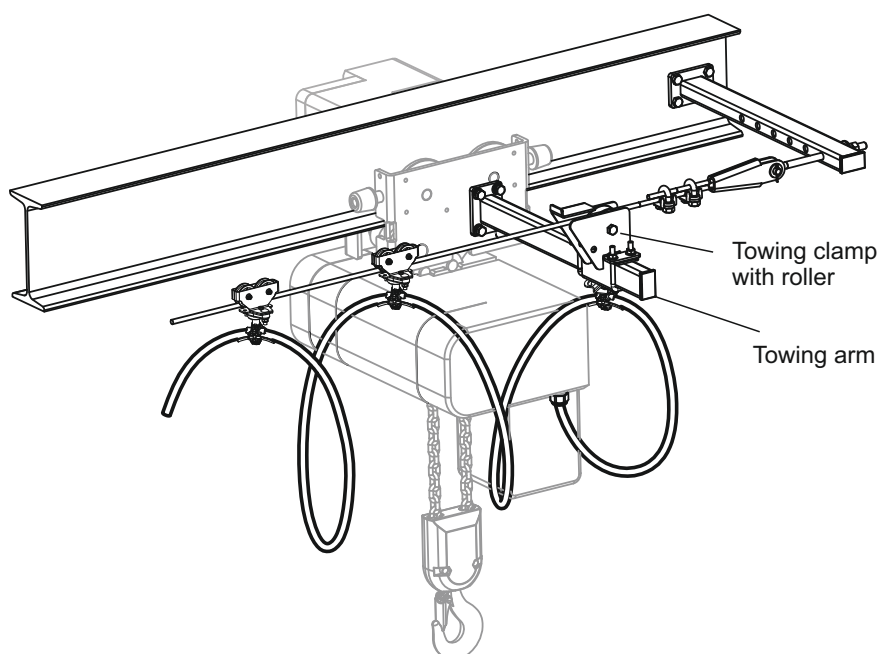
# Cable trolleys and accessories for round cables - steel rope track



## Components of supply system with towing clamp without roller



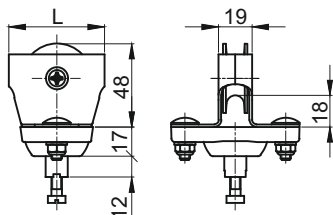
## Components of supply system with towing clamp with roller



# Cable trolleys and accessories for round cables - steel rope $\varnothing 6-8$ mm track



## Cable trolleys with ball joint WK-RL-55



**Material:** **body** - galvanized steel or stainless steel 1.4301  
**rollers** - polyamide PA  
**pans** - polymer (G signed)  
**mount with ball joint** - polyamide PA  
**axle** - stainless steel 1.4301  
**bolts, nuts** - galvanized steel or stainless steel 1.4301

Maximum trolley speed: **50 m/min**

Maximum trolley load (standard version): **6 kg**

Maximum trolley load (stainless version): **4 kg**

### N - stainless version

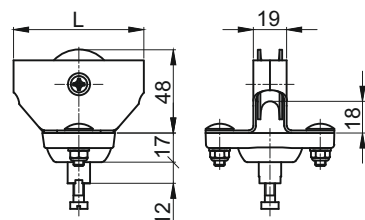
! It's suggested to use one roller trolleys alternately with two roller trolleys.

! For chosen trolley you should order appropriate cable holder **UL-1016**, **UL-1726** or **UL2736**

Catalog No.	Type	L [mm]	Weight [kg]
5010.01	WK-RL-55	55	0,150
5010.01-G	WK-RLG-55		

Catalog No.	Type
5010.01-N	WK-RL-55-N
5010.01-GN	WK-RLG-55-N

## Cable trolleys with ball joint WK-RL-75



**Material:** **body** - galvanized steel or stainless steel 1.4301  
**rollers** - polyamide PA  
**pans** - polymer (G signed)  
**mount with ball joint** - polyamide PA  
**axle** - stainless steel 1.4301  
**bolts, nuts** - galvanized steel or stainless steel 1.4301

Maximum trolley speed: **50 m/min**

Maximum trolley load (standard version): **6 kg**

Maximum trolley load (stainless version): **4 kg**

### N - stainless version

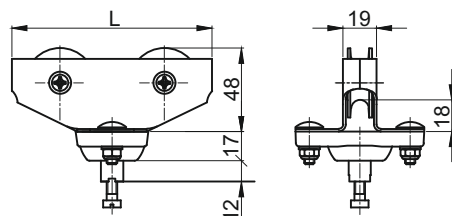
! It's suggested to use one roller trolleys alternately with two roller trolleys

! For chosen trolley you should order appropriate cable holder **UL-1016**, **UL-1726** or **UL2736**

Catalog No.	Type	L [mm]	Weight [kg]
5010.02	WK-RL-75	75	0,165
5010.02-G	WK-RLG-75		

Catalog No.	Type
5010.02-N	WK-RL-75-N
5010.02-GN	WK-RLG-75-N

## Cable trolleys with ball joint WK-RL-90, WK-RL-115



**Material:** **body** - galvanized steel or stainless steel 1.4301  
**rollers** - polyamide PA  
**pans** - polymer (G signed)  
**mount with ball joint** - polyamide PA  
**axle** - stainless steel 1.4301  
**bolts, nuts** - galvanized steel or stainless steel 1.4301

Maximum trolley speed: **50 m/min**

Maximum trolley load (standard version): **10 kg**

Maximum trolley load (stainless version): **6 kg**

### N - stainless version

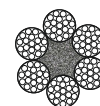
! For chosen trolley you should order appropriate cable holder **UL-1016**, **UL-1726** or **UL2736**

Catalog No.	Type	L [mm]	Weight [kg]
5009.90	WK-RL-90	90	0,205
5009.90-G	WK-RLG-90		
5010.03	WK-RL-115	115	0,220
5010.03-G	WK-RLG-115		

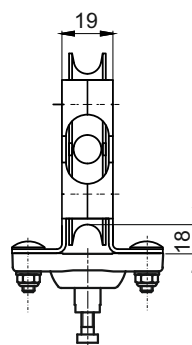
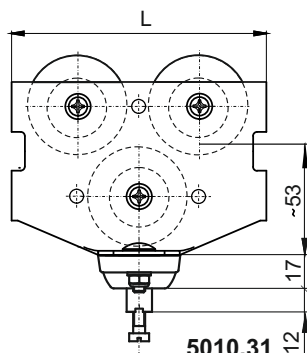
Catalog No.	Type
5009.90-N	WK-RL-90-N
5009.90-GN	WK-RLG-90-N
5010.03-N	WK-RL-115-N
5010.03-GN	WK-RLG-115-N



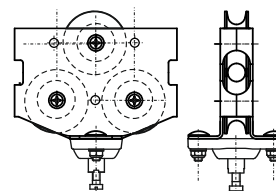
# Cable trolleys and accessories for round cables - steel rope $\varnothing$ 6-8 mm track



## 3 – roller cable trolley with ball joint for steel rope $\varnothing$ 6-8 mm



Different rollers combination is possible



5010.32

Maximum trolley speed: 50 m/min

Maximum trolley load:

- for 5002.31 (standard version): - 10 kg (stainless version): - 6 kg
- for 5002.32 (standard version): - 6 kg (stainless version): - 4 kg

**Material:** body - galvanized steel or stainless steel 1.4301  
rollers - polyamide PA  
pans - polymer  
mount with ball joint - polyamide PA  
axle - stainless steel 1.4301  
bolts, nuts - galvanized steel or stainless steel 1.4301

N - stainless version

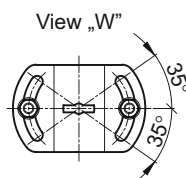
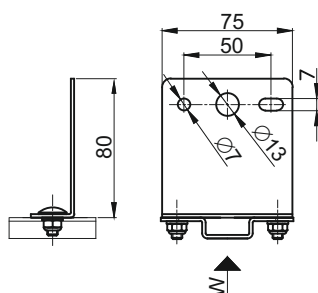
! 3-roller cable trolleys standard include a pans polymer

! For chosen trolley you should order appropriate cable holder **UL-1016, UL-1726 or UL2736**

Catalog No.	Type	L [mm]	Weight [kg]
5010.31	WK-RL08A-90	90	0,380
5010.32	WK-RL08B-90		

Catalog No.	Type
5010.31-N	WK-RL08A-90-N
5010.32-N	WK-RL08B-90-N

## Regulated end clamp ZRL



**Material:** body - galvanized steel or stainless steel 1.4301  
regulated clamp - galvanized steel or stainless steel 1.4301  
bolts, nuts - galvanized steel or stainless steel 1.4301

Maximum clamp load (standard version): 10 kg  
Maximum clamp load (stainless version): 6 kg

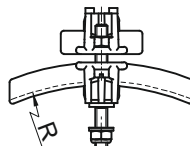
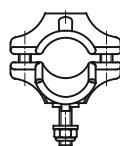
N - stainless version

! For chosen end clamp you should order appropriate cable holder **UL-1016, UL-1726 or UL2736**

Catalog No.	Type	Weight [kg]
5011.00	ZRL	0,210

Catalog No.	Type
5011.00-N	ZRL-N

## Cable holders UL-1016, UL-1726, UL-2736



**Material:** body - polyamide PA  
bolts, nuts - galvanized steel or stainless steel 1.4301

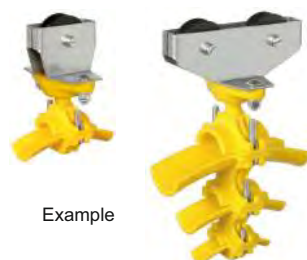
Maximum holder set load (standard version): 10 kg  
Maximum holder set load (stainless version): 6 kg

N - stainless version

Catalog No.	Type	Diameter range [mm]	R [mm]	Weight [kg]
1040.01	UL-1016	10 - 16	75	0,032
1040.02	UL-1726	17 - 26	110	0,058
1040.03	UL-2736	27 - 36	160	0,085

Catalog No.	Type
1040.01-N	UL-1016-N
1040.02-N	UL-1726-N
1040.03-N	UL-2736-N

KL 052018 EN

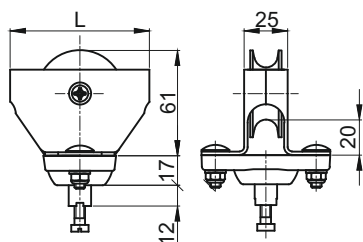


Example

# Cable trolleys and accessories for round cables - steel rope Ø10-12 mm track



## Cable trolleys with ball joint WK-RL2-80



**Material:** body - galvanized steel or stainless steel 1.4301  
 rollers - polyamide PA  
 pans - polymer (G signed)  
 mount with ball joint - polyamide PA  
 axle - stainless steel 1.4301  
 bolts, nuts - galvanized steel or stainless steel 1.4301

Maximum trolley speed: **50 m/min**

Maximum trolley load (standard version): **10 kg**

Maximum trolley load (stainless version): **6 kg**

! It's suggested to use one roller trolleys alternately with two roller trolleys

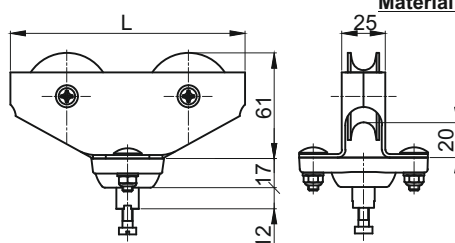
! For chosen trolley you should order appropriate cable holder **UL-1016, UL-1726 or UL2736**

Nr katalogowy	Typ	L [mm]	Ciężar [kg]
5010.04	WK-RL2-80	80	0,220
5010.04-G	WK-RL2G-80		

N - stainless version

Nr katalogowy	Typ
5010.04-N	WK-RL2-80-N
5010.04-GN	WK-RL2G-80-N

## Cable trolleys with ball joint WK-RL2-115, WK-RL2-135



**Material:** body - galvanized steel or stainless steel 1.4301  
 rollers - polyamide PA  
 pans - polymer (G signed)  
 mount with ball joint - polyamide PA  
 axle - stainless steel 1.4301  
 bolts, nuts - galvanized steel or stainless steel 1.4301

Maximum trolley speed: **50 m/min**

Maximum trolley load (standard version): **10 kg**

Maximum trolley load (stainless version): **6 kg**

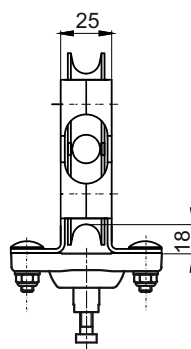
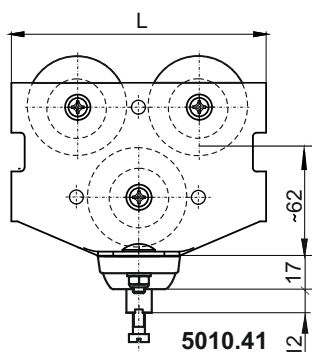
! For chosen trolley you should order appropriate cable holder **UL-1016, UL-1726 or UL2736**

Nr katalogowy	Typ	L [mm]	Ciężar [kg]
5009.92	WK-RL2-115	115	0,295
5009.92-G	WK-RL2G-115		
5010.05	WK-RL2-135	135	0,320
5010.05-G	WK-RL2G-135		

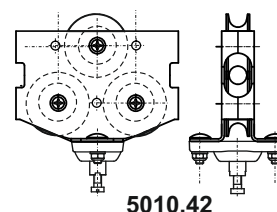
N - stainless version

Nr katalogowy	Typ
5009.92-N	WK-RL2-115-N
5009.92-GN	WK-RL2G-115-N
5010.05-N	WK-RL2-135-N
5010.05-GN	WK-RL2G-135-N

## 3 – roller cable trolleys with steel cable support for steel rope Ø10-12 mm



Different rollers combination is possible



**Material:** body - galvanized steel or stainless steel 1.4301  
 rollers - polyamide PA  
 pans - polymer  
 mount with ball joint - polyamide PA  
 axle - stainless steel 1.4301  
 bolts, nuts - galvanized steel or stainless steel 1.4301

Maximum trolley speed: **50 m/min**

Maximum trolley load:

- for **5002.41** (standard version): - **10 kg**  
 (stainless version): - **6 kg**  
 - for **5002.42** (standard version): - **6 kg**  
 (stainless version): - **4 kg**

! 3-roller cable trolleys standard include a pans polymer

! For chosen trolley you should order appropriate cable holder **UL-1016, UL-1726 or UL2736**

Catalog No.	Type	L [mm]	Weight [kg]
5010.41	WK-RL12A-125	125	0,500
5010.42	WK-RL12B-125		

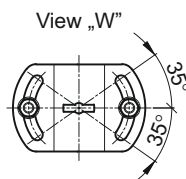
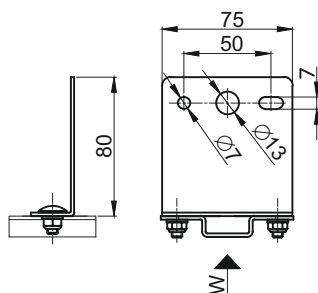
N - stainless version

Catalog No.	Type
5010.41-N	WK-RL12A-125-N
5010.42-N	WK-RL12B-125-N

# Cable trolleys and accessories for round cables - steel rope $\varnothing 10-12$ mm track



## Regulated end clamp ZRL



**Material:** body - galvanized steel or stainless steel 1.4301  
regulated clamp - galvanized steel or stainless steel 1.4301  
bolts, nuts - galvanized steel or stainless steel 1.4301

Maximum clamp load (*standard version*): **10 kg**  
Maximum clamp load (*stainless version*): **6 kg**

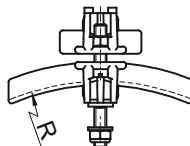
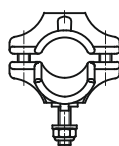
**!** For chosen end clamp you should order appropriate cable holder **UL-1016, UL-1726 or UL-2736**

Catalog No.	Type	Weight [kg]
5011.00	ZRL	0,210

**N - stainless version**

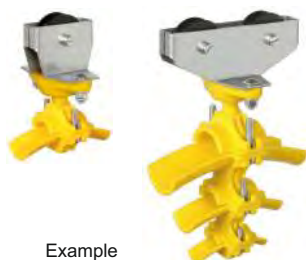
Catalog No.	Type
5011.00-N	ZRL-N

## Cable holders UL-1016, UL-1726, UL-2736



**Material:** body - polyamide PA  
bolts, nuts - galvanized steel or stainless steel 1.4301

Maximum holder set load (*standard version*): **10 kg**  
Maximum holder set load (*stainless version*): **6 kg**



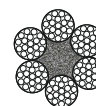
Example

Catalog No.	Type	Diameter range [mm]	R [mm]	Weight [kg]
1040.01	UL-1016	10 - 16	75	0,032
1040.02	UL-1726	17 - 26	110	0,058
1040.03	UL-2736	27 - 36	160	0,085

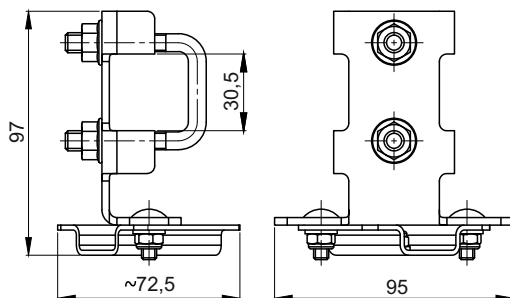
**N - stainless version**

Catalog No.	Type
1040.01-N	UL-1016-N
1040.02-N	UL-1726-N
1040.03-N	UL-2736-N

# Cable trolleys and accessories for round cables - steel rope track



## Towing clamp without roller



### Material:

**body** - galvanized steel  
**bolts, nuts** - galvanized steel

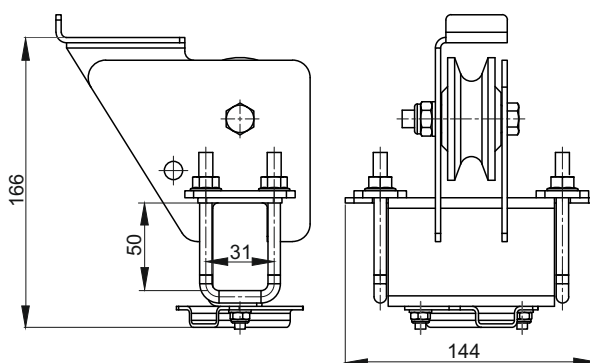
Maximum clamps load: **10 kg**

! To towing clamp without roller, use towing arm **ZL1-400** or **ZL1-630**

! For towing clamp without roller you should order appropriate cable holder **UL-1016, UL-1726 i UL2736**

Catalog No.	Type	Weight [kg]
5003.40	ZZL-1	0,29

## Towing clamp with roller



### Material:

**body** - galvanized steel  
**rollers** - polyamide PA  
**pans** - polymer  
**axle** - stainless steel 1.4301  
**bolts, nuts** - galvanized steel

Maximum clamps load: **10 kg**

! To towing clamp with roller, use towing arm **ZL2-400** or **ZL2-630**

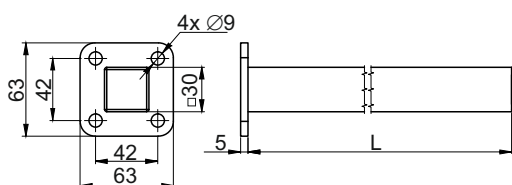
! For towing clamp with roller you should order appropriate cable holder **UL-1016, UL-1726 i UL2736**

Catalog No.	Type	Weight [kg]
5003.50	ZZRL-1	1,405

## Towing arm



**ZL1-...**

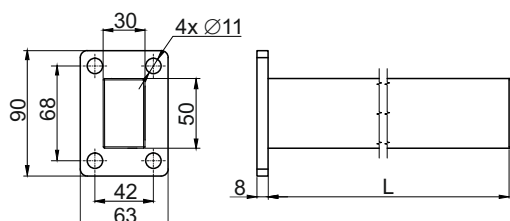


**Material:** cold formed, Sendzimir galvanized steel PN-EN 10327

Catalog No.	Type	Weight [kg]
5015.10	ZL1-400	1,23
5015.11	ZL1-630	1,42
5015.15	ZL2-400	1,68
5015.16	ZL2-630	1,94

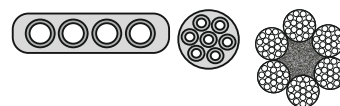


**ZL2-...**



! Towing arm for towing clamps with roller **ZZRL-1**

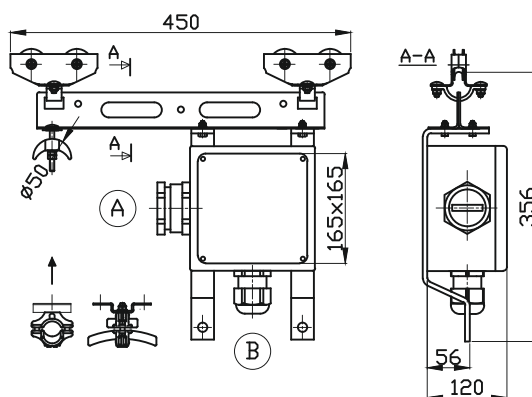
# Cable trolleys for flat and round cables - steel rope Ø6-8 mm and Ø10-12 mm track



## Control unit trolleys with junction box



UL-1726 cable holder  
for round festoon cable



### Material:

- trolleys** - galvanized steel
- rollers** - polyamide PA
- pans** - polymer
- axles** - stainless steel 1,4301
- cable support** - polyamide PA  
(polypropylene PP - on request)
- mount with ball joint** - polyamide PA
- body** - galvanized steel
- junction box** - PVC
- bolts, nuts** - galvanized steel
- nuts** - polyamide PA  
(for polyamide cable support D50T)

Maximum trolley speed: **40 m/min**  
Internal protection level: **IP 54**

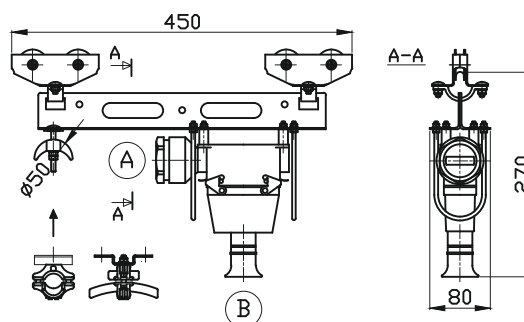
Catalog No.	Type	Festoon cable	Number of terminals	Gland		Diameter of wire rope [mm]	Weight [kg]
				A	B		
5009.10	WS-L10	flat	16 + E	PG 29	PG 21	Ø 6 - 8	2,980
5009.11	WS-L11		16 + E	PG 42	PG 21		3,080
5009.12	WS-L12		24 + E	PG 42	PG 29		3,180
5009.13	WS-L13	round	16 + E	PG 29	PG 21	Ø 10 - 12	2,920
5009.14	WS-L14		24 + E	PG 29	PG 29		3,095
5009.20	WS-L10B	flat	16 + E	PG 29	PG 21	Ø 10 - 12	2,980
5009.21	WS-L11B		16 + E	PG 42	PG 21		3,080
5009.22	WS-L12B		24 + E	PG 42	PG 29		3,180
5009.23	WS-L13B	round	16 + E	PG 29	PG 21	Ø 10 - 12	2,920
5009.24	WS-L14B		24 + E	PG 29	PG 29		3,095

On request - different cable gland sizes are available

## Control unit trolleys with multipolar junction



UL-1726 cable holder  
for round festoon cable



### Material:

- trolleys** - galvanized steel
- rollers** - polyamide PA
- pans** - polymer
- axles** - stainless steel 1,4301
- cable support** - polyamide PA  
(polypropylene PP - on request)
- mount with ball joint** - polyamide PA
- body** - galvanized steel
- multipolar junction** - die-cast aluminium
- bolts, nuts** - galvanized steel
- nuts** - polyamide PA  
(for polyamide cable support D50T)

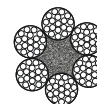
Maximum trolley speed: **40 m/min**  
Internal protection level: **IP 54**

Catalog No.	Type	Festoon cable	Number of terminals	Gland		Diameter of wire rope [mm]	Weight [kg]
				A	B		
5009.30	WS-L19	flat	16 + E	PG 29	PG 21	Ø 6 - 8	2,630
5009.31	WS-L15		16 + E	PG 42	PG 21		2,830
5009.32	WS-L16		24 + E	PG 42	PG 29		2,490
5009.33	WS-L17	round	16 + E	PG 29	PG 21	Ø 10 - 12	2,430
5009.34	WS-L18		24 + E	PG 29	PG 29		2,695
5009.40	WS-L19B	flat	16 + E	PG 29	PG 21	Ø 10 - 12	2,630
5009.41	WS-L15B		16 + E	PG 42	PG 21		2,830
5009.42	WS-L16B		24 + E	PG 42	PG 29		2,490
5009.43	WS-L17B	round	16 + E	PG 29	PG 21	Ø 10 - 12	2,430
5009.44	WS-L18B		24 + E	PG 29	PG 29		2,695

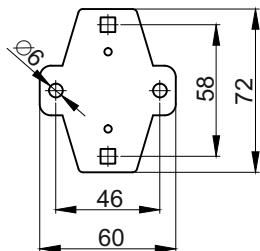
On request - different cable gland sizes are available



# Cable trolleys and accessories for steel rope track



## Mounting plate PM



**Material:** - galvanized steel or stainless steel 1.4301



Example

! Cable trolleys for flat cables - typically with **PM**  
! Cable trolleys for round cables – without **PM**

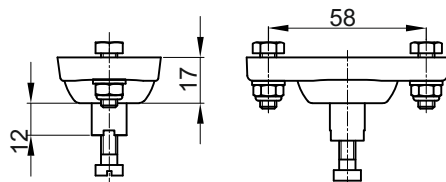
N - stainless version

Catalog No.	Type	Weight [kg]
5000.10	PM	0,045

Catalog No.	Type
5000.10-N	PM-N

! In case of e.g. long power supply, You should add a mounting plates **PM** for those trolleys, so they can provide mechanical connection between trolleys.

## Mount with ball joint MPK



**Material:** **body** - polyamide PA  
**bolts, nuts** - galvanized steel or stainless steel 1.4301

Maximum holder set load (galvanized steel): **10 kg**  
Maximum holder set load (stainless steel 1.4301): **6 kg**

N - stainless version

Catalog No.	Type	Weight [kg]
1041.00	MPK	0,045

Catalog No.	Type
1041.00-N	MPK-N

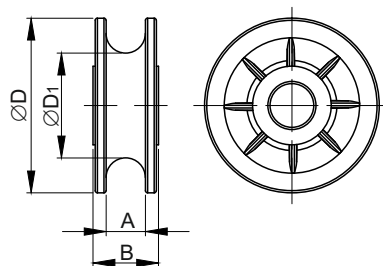
! Cable trolleys for round cables are typically equipped with mount with ball joint MPK. **MPK**.

## Polyamide rollers RL40, RL40G, RL50, RL50G



Roller with pan

Roller without pan

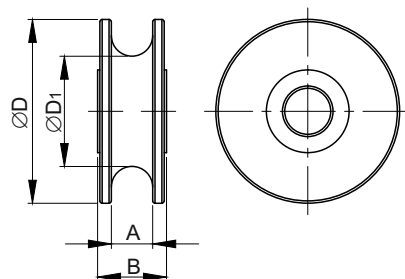
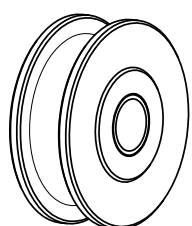


**Material:** **body** - polyamide PA  
**pans** - polymer

G - signed

Catalog No.	Type	Dimensions [mm]				Weight [kg]
		D	D <sub>1</sub>	A	B	
5000.01	RL40	40	24	9	15	0,010
5000.01-G	RL40G					
5000.03	RL50	50	30	13	20	0,020
5000.03-G	RL50G					

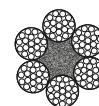
## Steel rollers RLS40, RLS50



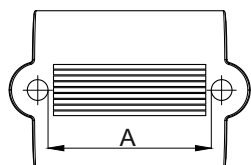
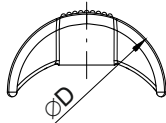
**Material:** **body** - galvanized steel  
**pans** - polymer (bronze)

Catalog No.	Type	Dimensions [mm]				Weight [kg]
		D	D <sub>1</sub>	A	B	
5000.05-G	RLS40G	40	24	9	15	0,080
5000.06-G	RLS50G	50	30	13	20	0,165

# Cable trolleys and accessories for steel rope track



## Plastic cable supports



**Material:** - polyamide PA (yellow)  
- polypropylene PP (grey)

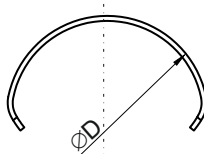
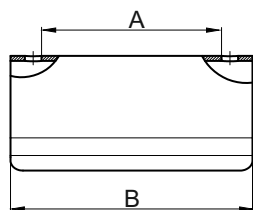
**!** The 50 and 80 mm polyamide PA cable supports in standard option are adapted to use with plastic nuts.

The 63 mm polyamide PA cable supports in standard option are adapted to use with steel nuts.

The 50, 63 and 80 mm polypropylene PP cable supports in standard option are adapted to use with steel nuts.

Catalog No.	Type	Material	Dimensions [mm]			Weight [kg]
			D	A	B	
1080.01	D50Tx76-PA	polyamid PA	50	52	76	0,023
1080.03	D63Tx76-PA		63			0,027
1080.05	D80Tx76-PA		80			0,038
1080.11	D50Tx76-PP	polipropylen PP	50	52	76	0,023
1080.13	D63Tx76-PP		63			0,027
1080.15	D80Tx76-PP		80			0,038

## Steel cable supports



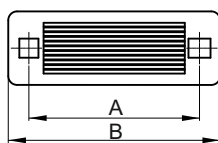
**Material:** - galvanized steel  
- stainless steel 1.4301

**N** - stainless version

Catalog No.	Type	Dimensions [mm]			Weight [kg]
		D	A	B	
1081.01	D50x76	50	52	76	0,098

Catalog No.	Type
1081.01-N	D50x76-N

## Separators



**Material:** - polyamide PA (black)  
- polypropylene PP (grey)

Catalog No.	Type	Material	Dimensions [mm]		Weight [kg]
			A	B	
1080.20	L76-PA	polyamide PA	58	71	0,004
1080.21	L96-PA		78	93	0,007
1080.25	L76-PP	polypropylene PP	58	71	0,004
1080.26	L96-PP		78	93	0,007

## Plastic conical nut



**Material:** - polyamide PA

Catalog No.	Type	Material	Weight [kg]
1080.30	M6-PA	polyamide PA	0,003

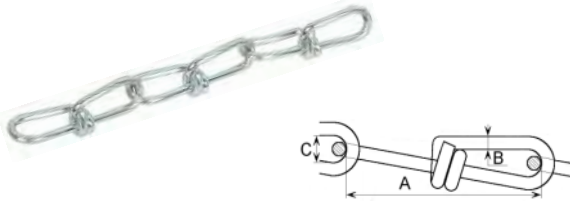
**!** The plastic nuts are designed to fastening the 50 and 80 mm polyamide cable supports.

# Cable trolleys and accessories for steel rope track



## Technical chain VICTOR DIN 5686

**Material:** - galvanized steel



Catalog No.	Type	Nominal size	Dimensions [mm]			Weight [kg]
			A	B	C	
1009.24	ŁOV-2.0	2,0	28,0	2,0	5,1	0,080
1009.25	ŁOV-2.2	2,2	31,0	2,2	5,6	0,110

## Technical chain DIN 5685

**Material:** - galvanized steel



Catalog No.	Type	Nominal size	Dimensions [mm]			Weight [kg]
			A	B	C	
1009.26	ŁOK-3	3,0	16,0	3,0	5,0	0,165
1009.27	ŁOK-4	4,0	19,0	4,0	7,0	0,295

## Stainless technical chain DIN 766

**Material:** - stainless steel AISI 316

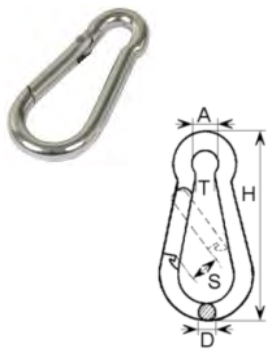


**N - stainless version**

Catalog No.	Type	Nominal size	Dimensions [mm]			Weight [kg]
			A	B	C	
1009.26-N	ŁOK-3-N	3,0	15,7	3,0	5,0	0,170
1009.27-N	ŁOK-4-N	4,0	16,0	4,0	7,0	0,320

## Snap hooks

**Material:** - galvanized steel  
- stainless steel AISI 316



### Galvanized snap hooks wg DIN 5299 C

Catalog No.	Type	Nominal size	Maximum strength [kg]	Dimensions [mm]					Weight [kg]
				A	D	H	S	T	
1009.21	KR1	40x4	80	6	4	40	6	5	0,008
1009.22	KR2	50x5	100	8	5	51	7	6	0,016

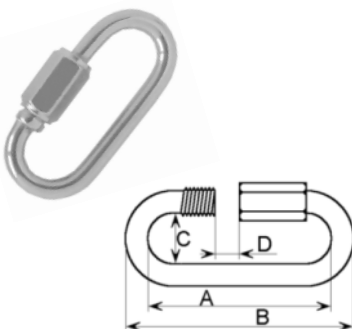
### Stainless steel snap hooks DIN 5299 C AISI 316

**N - stainless version**

Catalog No.	Type	Nominal size	Maximum strength [kg]	Dimensions [mm]					Weight [kg]
				A	D	H	S	T	
1009.21-N	KR1-N	40x4	80	6	4	40	7	5	0,008
1009.22-N	KR2-N	50x5	100	8	5	50	7	7	0,015

## Twisted link

**Material:** - galvanized steel  
- stainless steel AISI 316



### Galvanized twisted link

Catalog No.	Type	Nominal size	Maximum strength [kg]	Dimensions [mm]				Weight [kg]
				A	B	C	D	
1009.40	OGS035	3,5N	50	29	36	10	4	0,008

### Stainless twisted link AISI 316

**N - stainless version**

Catalog No.	Type	Nominal size	Maximum strength [kg]	Dimensions [mm]				Weight [kg]
				A	B	C	D	
1009.40-N	OGS035-N	3,5N	50	30	37	11	5	0,009

# Cable trolleys and accessories for steel rope track



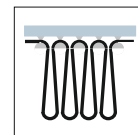
## Cables for crane industry – general information

UNILIFT has got a wide offer of festoon cables made by leading producers. Below is the list of typical cables. These cables are mainly applied in: festoon systems, cable reels, energy guiding chains, etc.

Festoon systems consist **flat cables** characterized by flexibility and very low curve radius. They're able to be bundled – what gives reduction of festoon's size.

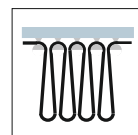
Here are the main types of flat cables (insulation PVC and rubber, shielded or unshielded):

- H05VVH6-F
- H07VVH6-F
- YFLY, KYFLY
- YCFLY, YFCLY, KYCFLY, KYFLCY (EMV)
- NGFLGOU UL
- M(StD)HOU UL (EMC)
- LOSH



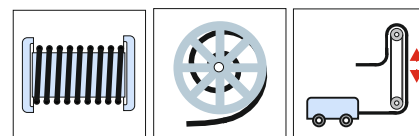
Festoon systems consist **round cables** characterized by flexibility and very low curve radius. Here are the main types of flat cables (insulation PUR and rubber, shielded or unshielded):

- FESTOONFLEX PUR-HF
- FESTOONFLEX C-PUR-HF
- KAWEFLEX PUR-HF
- KAWEFLEX C-PUR-HF
- H07RN-F



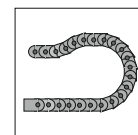
Festoon systems consist **round cables** characterized by flexibility and very low curve radius. Here are the main types of flat cables (insulation PUR and rubber, shielded or unshielded):

- TROMMELFLEX PUR-HF
- TROMMELFLEX-HD SPECIAL
- TROMMELFLEX KSM-S (N)SHTOU-J



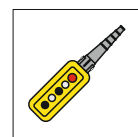
For energy guiding chains the most commonly used cables are:

- FESTOONFLEX PUR-HF
- FESTOONFLEX C-PUR-HF
- TROMMELFLEX KSM-S (N)SHTOU-J
- STN
- STCN (EMV)



Cable for connect the control stations with crane or conveyor devices, hoists, etc. equipped with two integral steel strings:

- FYMYTW
- KASTER



## Cable glands – general information

UNILIFT has to offer a wide assortment of cable glands for cables pointed above.

Cable glands types:

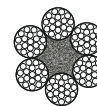
- plastic PG and metric for flat and round cables
- nickel plated brass PG and metric for flat cables,
- special glands,
- universal glands



More information is contained in our catalog: „*Electrical cables for cranes, elevators and conveyor systems*”.

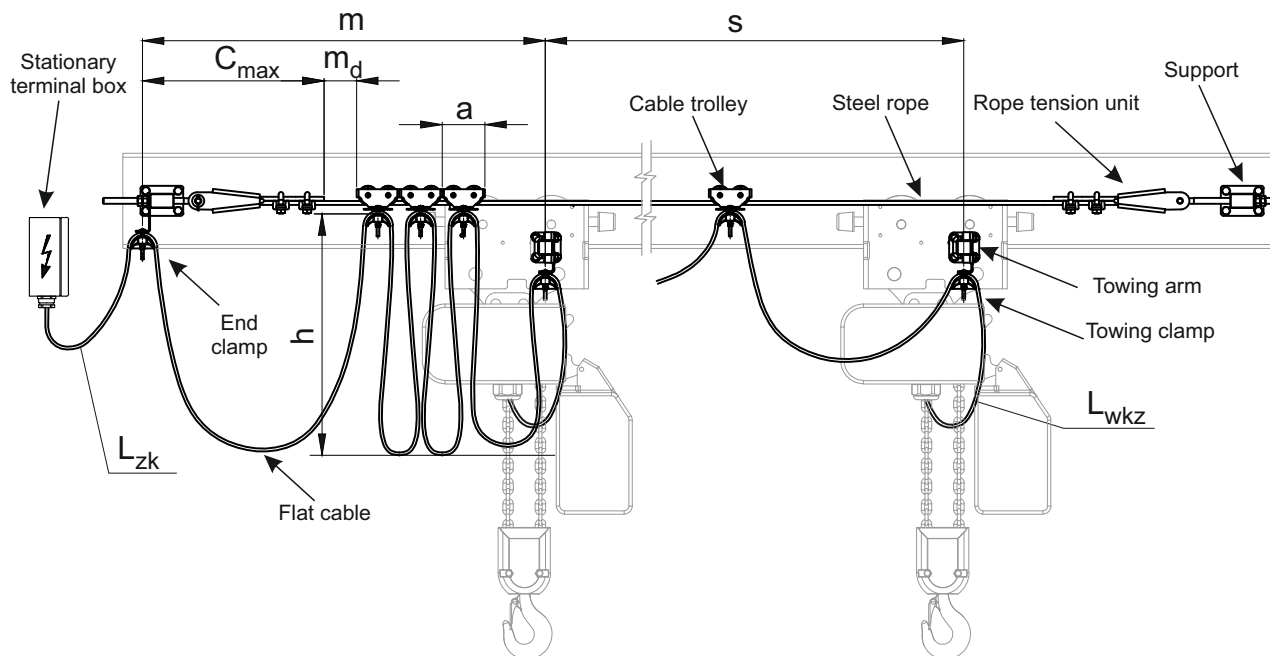
Please inquire defining the type, number of wires, conductor cross-section and the required amount in meters.  
We will send you an offer immediately.

# Cable trolleys and accessories for steel rope track



## Steel rope power supply line selection

### Steel rope power supply line components



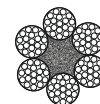
### Type of power device (e.g. crane, hoist, technical device, etc.)

Device localization:	indoor <input type="checkbox"/>	outdoor <input type="checkbox"/>	maritime climate <input type="checkbox"/>
Environment:	normal <input type="checkbox"/>	dust, (description) <input type="text"/>	
	chemically aggressive <input type="checkbox"/>	(description) <input type="text"/>	
	potentially explosive area <input type="checkbox"/>	(description) <input type="text"/>	
Temperature range:	<input type="text"/> °C min.,	<input type="text"/> °C max.	
Time of trolleys acceleration to rated speed:	<input type="text"/> s		
Supply system length (towing trolley route length):	s = <input type="text"/> m		
Permissible trolleys storage area length:	m = <input type="text"/> m		
Permissible height of cable loop:	h = <input type="text"/> m		
Trolleys speed:	<input type="text"/> m/min		
Cable length from towing clamp to mobile terminal box:		Lwkz = <input type="text"/> m	
Cable length from end clamp to stationary terminal box:		Lzk = <input type="text"/> m	
Rope diameter:	Ø6 mm <input type="checkbox"/>	Ø8 mm <input type="checkbox"/>	Ø10 mm <input type="checkbox"/> Ø12 mm <input type="checkbox"/>

KL 052018 EN



# Cable trolleys and accessories for steel rope track



## Steel rope power supply line selection

Cable type: electric ☐ other (e.g. for gas, liquid) ☐

### Supply festoon or/and control festoon cable list:

Cable type							Cable dimension (e.g. 4G2,5; 12G1,5)	Supply festoon	Control festoon	Amount of cables in one mounting point	Diameter d of a round cable [mm] or flat cable cross section b x A [mm]
Flat	Round	PVC	Rubber	PVC shielded	Rubber shielded	Other					

### Offer should contain:

Steel rope (page 6): yes ☐ no ☐

Galvanized steel rope - without PVC sheath ☐

Galvanized steel rope - with PVC sheath ☐

Stainless steel rope AISI 316 without PVC sheath ☐

Steel rope mounting (page 6 and 7): RTU -rope tension unit ☐ support ☐

Towing arm and towing clamp without roller (page 16 and 22): ☐

Towing arm and towing clamp with roller (page 16 and 22): ☐

Additional notes:

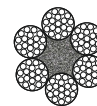
### Contact data:

Company name:

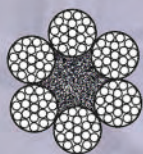
Address:

Contact person:  Office:

Phone number:  e-mail:







## Cable trolleys and accessories for steel rope track



**UNILIFT®**



**UNILIFT**

Spółka z ograniczoną odpowiedzialnością Sp.k.  
85-461 Bydgoszcz, Street Ołowiana 16, Poland  
tel./fax +48 52 581 05 15  
e-mail: [office@unilift.pl](mailto:office@unilift.pl)  
[www.unilift.pl](http://www.unilift.pl)